



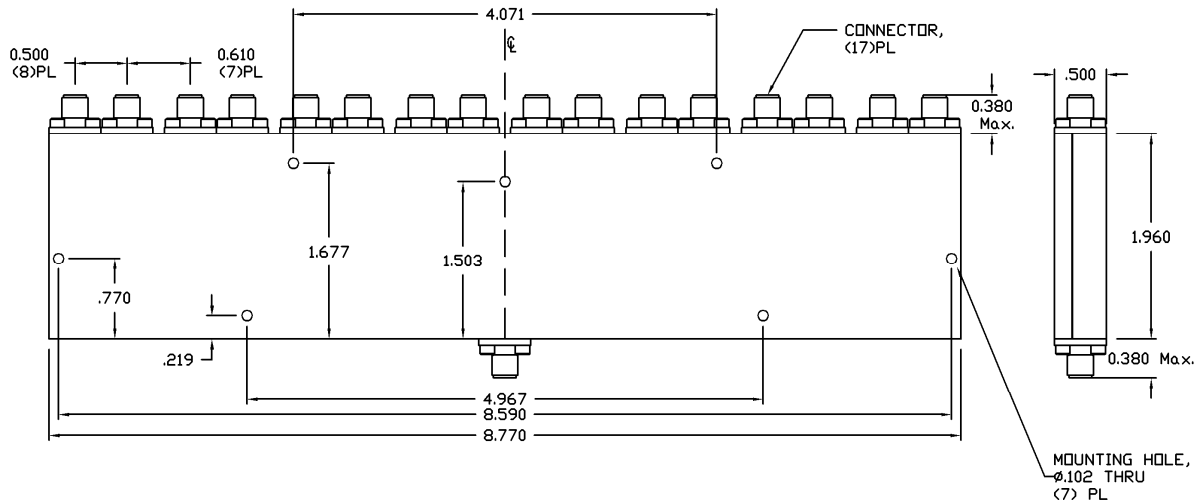
# 16-Way Stripline Power Divider

REV.2011.A

## MODEL D-1040-16\*

### OUTLINE DRAWING

UNIT: INCH



ELECTRICAL SPECIFICATIONS	FREQUENCY RANGE	10.0-40.0	GHz
	INPUT VSWR	Max.	1.80:1
OUTPUT VSWR	Max.	1.80:1	
AMPLITUDE BALANCE	Max.	0.90	dB
PHASE BALANCE	Max.	9.00	Deg.
INSERTION LOSS	Max.	5.20	dB
ISOLATION	Min.	16.0	dB
POWER RATING	Avg.	20.0	W
	Peak	3.0	kW
PHYSICAL SPECIFICATIONS	CONNECTOR TYPE	2.92mm (K) Female	
	WEIGHT	Max.	19.85 Oz
	OPERATIONAL TEMP.	- 32 to + 85 °C	

\*Square Housing



**Electromagnetic Technologies Industries, Inc. (ET Industries)**  
 50 Intervale Road, Boonton, NJ, 07005, USA E-Mail: sales@etiworld.com  
 Phone: 001+(973)-394-1719 Fax: 001+(973)394-1710 www.etiworld.com