



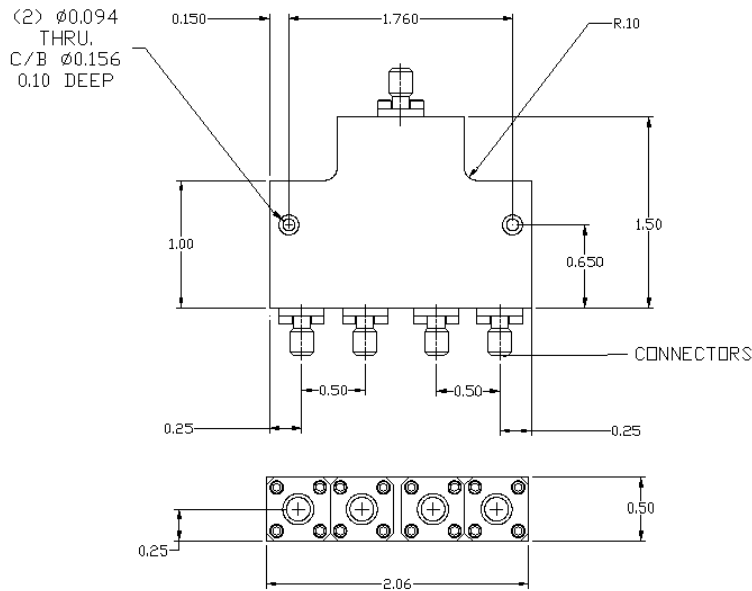
Rev.2016A

# 4-Way Stripline Power Divider

## MODEL D-1826-4

### OUTLINE DRAWING

UNIT: INCH



ELECTRICAL SPECIFICATIONS	FREQUENCY RANGE		18.0-26.5	GHz
		INPUT VSWR	Max.	1.60:1
	OUTPUT VSWR	Max.	1.60:1	
	AMPLITUDE BALANCE	Max.	0.60	dB
	PHASE BALANCE	Max.	6.0	Deg.
	INSERTION LOSS	Max.	1.90	dB
	ISOLATION	Min.	19.0	dB
	POWER RATING	Avg.	19.0	W
		Peak	3.0	kW
PHYSICAL SPECIFICATIONS	CONNECTOR TYPE		SMA Female	
	WEIGHT	Max.	2.80	Oz
	OPERATIONAL TEMP.		- 32 to + 85 °C	



**Electromagnetic Technologies Industries, Inc. (ET Industries)**  
 50 Intervale Road, Boonton, NJ, 07005, USA E-Mail: sales1@etiworld.com  
 Phone: 001+(973)-394-1719 Fax: 001+(973)394-1710 www.etiworld.com