

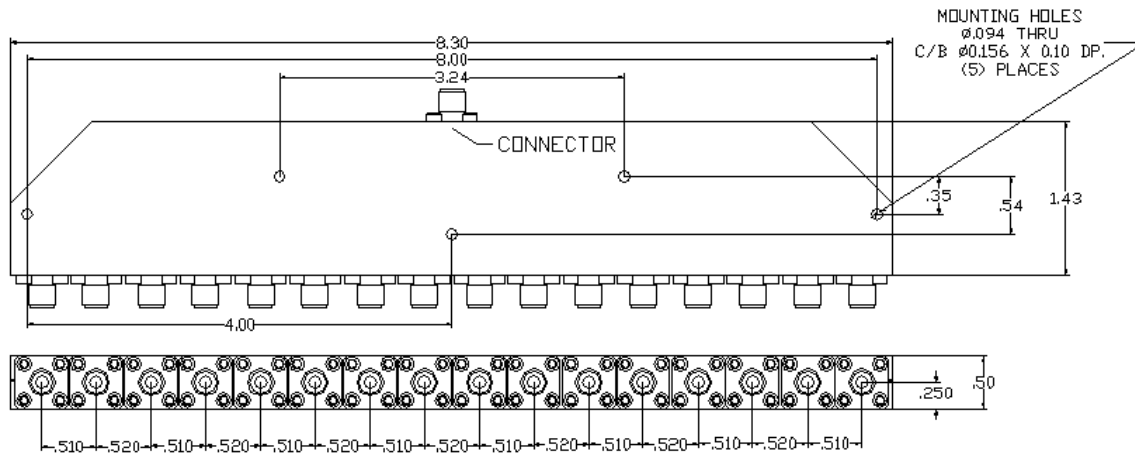


16-Way Stripline Power Divider

MODEL D-1840-16

OUTLINE DRAWING

UNIT: INCH



ELECTRICAL SPECIFICATIONS	FREQUENCY RANGE		18.0-40.0	GHz
		INPUT VSWR	Max.	1.80:1
	OUTPUT VSWR	Max.	1.80:1	
	AMPLITUDE BALANCE	Max.	1.00	dB
	PHASE BALANCE	Max.	10.0	Deg.
	INSERTION LOSS	Max.	5.20	dB
	ISOLATION	Min.	16.0	dB
	POWER RATING	Avg.	20.0	W (See Note 1)
		Peak	3.0	kW
PHYSICAL SPECIFICATIONS	CONNECTOR TYPE		2.92mm (K) Female	
	WEIGHT	Max.	11.10	Oz
	OPERATIONAL TEMP.		- 32 to + 85 °C	
	STORAGE TEMP.		- 40 to + 85 °C	

***Note 1:**

Rating power at the ports is 20 Watts at VSWR=1.80:1
And 2 Watts at VSWR=Infinite

